

House Type G1 LHS - Gross Internal Area		
Area Type	Proposed Area	DoHPCLG Area Min.
Ground Floor	63.8 m <sup>2</sup>	
First Floor	63.8 m <sup>2</sup>	
Grand Total	127.6 m <sup>2</sup>	92.0 m <sup>2</sup>

House Type G1 LHS - Space Provision & Room Sizes		
Area Type	Proposed Area	DoHPCLG Area Min.
Aggregate Bedroom Area	38.4 m <sup>2</sup>	32.0 m <sup>2</sup>
Aggregate Living Area	34.5 m <sup>2</sup>	34.0 m <sup>2</sup>
Main Living Area	34.5 m <sup>2</sup>	13.0 m <sup>2</sup>

House Type G1 LHS - Storage Provision		
Area Type	Proposed Area	DoHPCLG Area Min.
Storage	6.3 m <sup>2</sup>	5.0 m <sup>2</sup>

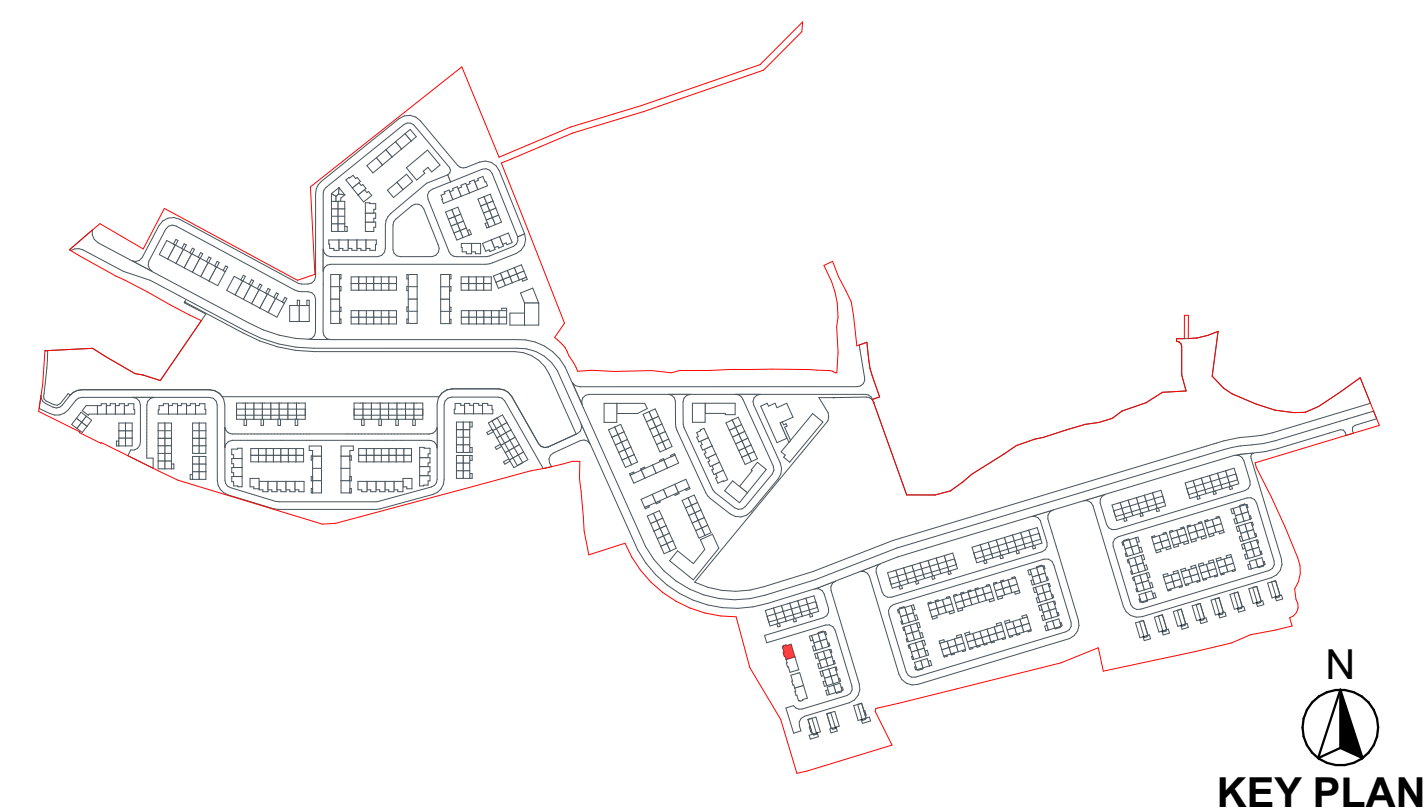
Unit Number: 153

NOTES ON FINISHES:	
ROOF:	TO BE FINISHED IN SLATE OR CONCRETE ROOF TILES IN SELECTED COLOUR OR SIMILAR APPROVED
WALLS:	SELECTED CLAY BRICKWORK WHERE INDICATED OTHERWISE SELECTED SELF-COLOURED RENDER
JOINERY:	ALL WINDOWS AND DOORS, FRAMES AND LEAFS TO BE ALUMINIUM POWDER COATED TO APPROVED COLOUR OR UPVC OR PAINTED TIMBER TO APPROVED COLOUR. OBSCURE GLAZING WHERE INDICATED TO SENSITIVE WINDOWS.
RAINWATER GOODS:	GUTTERS, DOWNPIPES AND FIXINGS TO BE UPVC OR ALUMINIUM POWDER COATED TO SELECTED COLOUR TO MATCH ROOF SLATES.

Notes:

Refer to Site Plan for finished floor levels to survey datum, orientation and handing of type for each unit.

Do not scale from this drawing.  
Use figured dimensions only.  
All errors and omissions to be reported to the Architect.  
This drawing is to be read in conjunction with relevant consultant's drawings.  
This drawing is for planning purposes only and not for construction.  
This drawing or design may not be reproduced without permission.

[illegible]